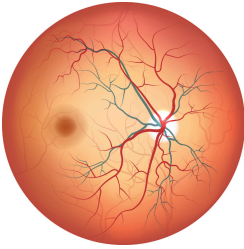


OCULOMICS

THE RETINA



At the back of the eye, there is a layer of light sensitive tissue called the retina. When light enters the eye, the retina converts it into signals that the brain interprets as images. This is the basis of sight.

The retina is unique in that it is the only part of the body where we can see neurological tissue and blood vessels directly. It is because of this that the eye is often termed a 'window into health'.

Increasingly, evidence is showing that many systemic health conditions can be predicted and/or diagnosed through examining the retina and other aspects of the eye.

DIAGNOSIS

'Oculomics' is the rapidly developing field that combines high-resolution digital imaging of the eye with artificial intelligence analysis to diagnose systemic conditions. There is growing evidence that many health conditions can be diagnosed or predicted in this way.

The eye can be imaged in different ways – including retinal photography and OCT scanning, providing microscopic views of neurological layers and blood vessels. The front of the eye can also be analysed in a similar way. Below is a diagram of the conditions that have so far been associated with observable changes in the eye through the application of oculomics.

