



Pumphandle Lecture 2012

"What pump handles need to be removed to save the most lives in this century?" Tom Frieden, *Director of the US Centers for Disease Control and Prevention (CDC, Atlanta)*

Wednesday 12th September – 5:30 pm
John Snow Hall London School of Hygiene and Tropical Medicine



Dr Tom Frieden holds one of the world's highest profile jobs in disease control. He trained in medicine and public health at Columbia University and in infectious diseases at Yale, before joining the CDC as an Epidemic Intelligence Service officer, being assigned to New York City. From 1992-1996, he led the city's tuberculosis control program - which became internationally recognised for its dramatic success, including reducing cases of multidrug-resistant tuberculosis by 80 percent. He was then seconded by CDC to WHO, and spent five years assisting the Government of India implement their Revised National Tuberculosis Control Program.

He returned to the USA to be Commissioner of the NYC Health Department for seven years, where he established aggressive programmes to reduce smoking and make New York City the first place in the United States to eliminate trans-fats from restaurants, introducing rigorous monitoring of the diabetes epidemic, and requiring certain restaurants to post calorie information prominently. The department also greatly increased colon cancer screening and eliminated racial/ethnic disparities in screening rates. Under his leadership, the department established the largest community electronic health records project in the United States, an initiative which is considered a model for efforts to expand electronic health record use in the USA. In 2009 he was appointed by President Obama to be Director of CDC.

The Lecture will be followed by the Society's Annual General Meeting, to be held at the John Snow Public House (at the corner of Broadwick and Cambridge Streets, in Soho), to which all are invited...

The Lecture will be recorded and placed on the Society's website.

Pumphandle Lecture 2011

"Epidemiology for the Bottom Billion - where there is not even a pump handle to remove!"

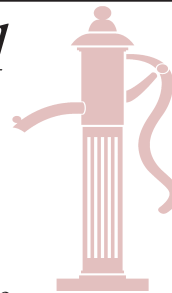
Hans Rosling, *Professor, Karolinska Institute and Chairman, Gapminder Foundation*

Another 'standing room only' audience in the John Snow Lecture Theatre at the LSHTM were treated to a unique and stimulating take on global epidemiology.

Hans Rosling's academic background in both statistics and medicine has proved ideal for researching malnutrition, plant genetics, economics – as well as outbreaks of infectious disease. He was inspired by John Snow's work early in his career and he applied the 'medical detective' role in his research; part of his lecture concerned a detailed account of his investigation of the mysterious disease 'konzo' in Mozambique. After ten years of collaborative research, he was able to show that the cause was a natural toxin in cassava roots, combined with malnutrition. Like Snow, he has questioned received knowledge and commonly used terms such as 'developing country' (he prefers definitions based on low, middle or high income) – in addition to challenging emotive terms, for example the threat inherent in 'population explosion'.

Using dynamic graphs he demonstrated how global population growth is as much, or more, to do with greater life expectancy as with birth rates, the latter now falling in many countries. The global birth rate stopped growing 20 years ago and the population increases are now due to survival of older adults. The implication, is the inevitability for world population to rise from seven to nine billion – if we want the longer lifetimes that medical and social advances have achieved. Hans Rosling's curiosity, passion for research and clinical experience as a district medical officer in Africa have made him an exceptionally versatile epidemiologist, seeking practical solutions to a range of challenging problems, such as the cost of drug patents.

The Gapminder Foundation, which he founded, continues to find new ways of



displaying evidence, provoking new approaches and inspiring all who witness their presentations.

This excellent Pumphandle Lecture ended with Hans performing the traditional ceremony of removing the pump handle – and he then joined the enthusiastic crowd at the John Snow pub. Professor Rosling is an engaging and persuasive speaker – and you can hear and see his lecture on the John Snow website:

<http://www.johnsnowsociety.org/lectures/lecture2011.html>

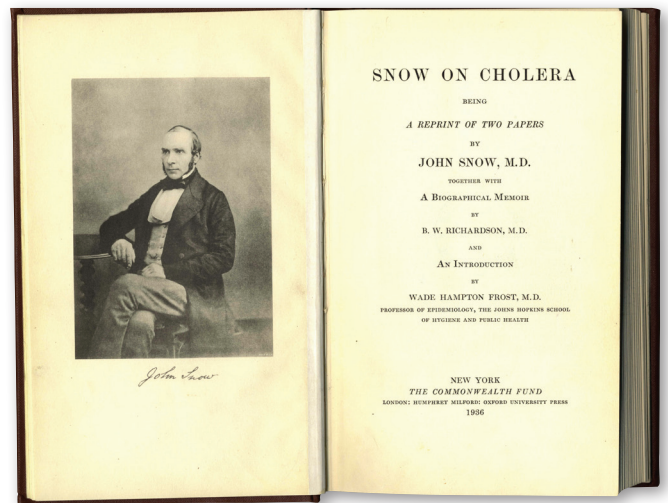
Dr Ros Stanwell-Smith,
Hon. Sec, John Snow Society

John Snow Bicentenary

March 15-16 and April 11-12, 2013

The John Snow Society, together with the London School of Hygiene and Tropical Medicine, The Wellcome Trust, and the International Epidemiological Association are hosting events to commemorate the bicentenary of John Snow's birth.

A meeting to coincide with Snow's birth anniversary (15 March) will focus on historical aspects of his work and will include a public lecture and a day-long meeting orientated to medical history. A contemporary evaluation of Snow's legacy will be held on 11 and 12 April and will include an appraisal of developments in epidemiological methods and their application in disciplines within and beyond the health sciences. Both programmes include rosters of internationally renowned speakers. An exhibition on Snow and cholera in London will be held between the two meetings at LSHTM. All will take place at the London School of Hygiene and Tropical Medicine.



Title page of 1936 facsimile of the classic (second) edition of Snow's "On the mode of communication of cholera" (1855).

Registration will be on line – via link <http://johnsnowbicentenary.lshtm.ac.uk>

We look forward to seeing many members of the Society at these occasions.

March meeting:

Mapping Disease – John Snow and Cholera

Friday March 15 – Saturday March 16

Friday 15 March 2013

LSHTM

18:00 Public lecture: Sandra Hempel: Cholera in London.

19:00 Reception

Saturday 16 March 2013

Scientific meeting

9:00 Registration/Coffee

9:30 Christopher Hamlin: The biography of cholera

10:15 Jan Vandenbroucke: The image of John Snow

11:00 Coffee

11:30 Alejandro Cravioto: ICDDR,B – a history of cholera research

12:15 George Davey Smith: Cholera vaccination 1894: the first controlled medical trial

13:00 Lunch

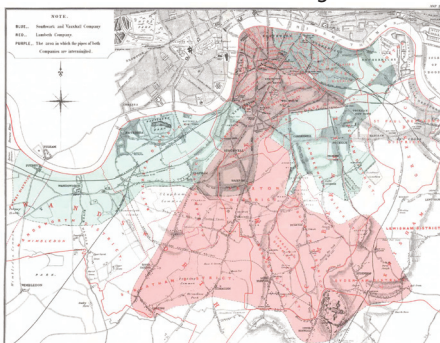
14:30 Michael Dunnill: William Budd on cholera

15:15 Tom Koch: John Snow, hero of cholera, RIP

16:00 Tea

16:30 Gordon Dougan: Waves of transmission

17:15 Thanks and close of meeting



April meeting:

"Snow's legacy: epidemiology today and tomorrow"

Thursday April 11 – Friday April 12

Thursday April 11, 2013

10:00 Registration and coffee

Session I: Introduction

11:00 Welcome (Peter Piot)

11:10 Epidemiology: Broad Street to broad view (Paul Fine)

11:30 Lecture: John Snow and the historical context (Nigel Paneth)

Lunch

Session II: Epidemiology today:

14:00 Epidemiology today: Who are we? (Cesar Victora)

14:30 Aetiology: inferring causes (Ken Rothman)

15:00 The communication of risk (David Spiegelhalter)

Tea

Session III: Update on John Snow themes

16:00 Maps, visual presentations or inferring infectious agents (TBC...)

16:30 Hygiene: the foundation of public health (Val Curtis)

17:00 Cholera: from the Ganges to Soho to Haiti (David Heymann)

17:30 "Installation" of the pump in John Snow Hall

19:00 Dinner at the Wellcome Trust... and speaker: "Bad Science" (Ben Goldacre)

Friday April 12, 2013

Session IV: Transmission and spread

9:30 Treating violence as an epidemic disease (Gary Slutkin)

10:00 Epidemiology of financial networks (Robert May)

Coffee

Session V: Intervention

11:00 Mental health for all – by all (Vikram Patel)

11:30 Heterogeneity - real or apparent? - does it matter? (Richard Peto)

12:00 So it actually works - what now? (Ian Roberts)

Lunch

Session VI: Epidemiology beyond health

14:00 Epidemiology, crime and criminality (Richard Wortley)

14:30 Opportunities and challenges of trials in education research (Carole Torgerson)

15:00 Epidemiology, randomized trials, and the search for what works in economic development (Angus Deaton)

Tea

Session VII: Access to electronic databases epidemiology goes digital – Panel and debate Chair: (Jon Snow)

16:00 The argument for more access – (Mark Walport)

16:15 The legal and ethical problems (TBC)

16:30 Patient or ethical perspective (TBC)

16:45 Audience - comments and questions....

17:30 Lancet announcement (Richard Horton)

18:13 Closure

18:58 John Snow Pub

Map of the distribution of pipe networks of the Southwark and Vauxhall (Blue-green) and Lambeth (red) water companies, south of the River Thames in London. From Snow's "On cholera", 2nd edition, 1855.

Nordic Chapter report

The Nordic Chapter of the John Snow Society held its general assembly in Stockholm, Sweden in June during the Nordic Drinking Water Conference. The Nordic Drinking Water Conferences are arranged every second year and circulates between the Nordic countries.

The Pumphandle Award 2012 was awarded to Dr Bjørnar Eikebrokk, chief researcher at SINTEF, for his outstanding and enthusiastic work to promote good and safe drinking water, with special focus on water treatment and its implications for disinfection effectiveness, risk and hazard analysis. Bjørnar Eikebrokk is a highly respected researcher internationally and is known for his ability to transfer knowledge and information.



During more than 30 years Bjørnar Eikebrokk has worked devotedly to improve water treatment in general and especially with respect to coagulation and filtration processes and their performance. In the last five years he has also worked on characterization of natural organic matter and different water treatment processes to explain effects and reactions. This has a major influence on the disinfection effectiveness and contributes to improve water safety. In this perspective we point to his work on guidelines for UV-disinfection, a joint project Norway – Sweden.

Because of his expertise in water treatment and disinfection effectiveness Eikebrokk has been involved in the evaluation of the Giardiasis outbreak in Bergen, Norway in 2004 and the Cryptosporidium outbreak in Østersund, Sweden in 2010.

Bjørnar Eikebrokk is an honored member of the Norwegian and Scandinavian drinking water sector, widely known for his engagement and knowledge.

Another cholera connection from London, to Texas... to Haiti

Marty Gibson, PhD, RN, CHES, and Betty Bowles, PhD, RNC, from Midwestern State University in Wichita Falls, Texas, joined the John Snow Society while studying public health in London in 2011. During the Christmas holidays, they joined a medical mission to Haiti. During that mission trip, the emphasis was on education for health promotion and disease prevention in a remote mountainous region that has neither clean water sources nor sanitation facilities. A major concern was prevention of cholera since the outbreak following the 2010 earthquake. Every day they witnessed the pilgrimage of local children to find water. As part of the health education, suggestions were given on sanitizing the water and storing it in clean containers. New and expectant mothers were also encouraged to breastfeed as long as possible to protect their babies from enteric infections including cholera.



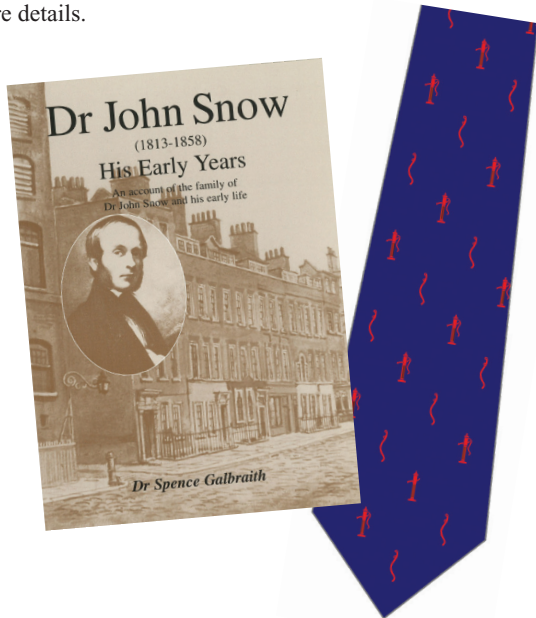
Children walking to fetch water from a well, and the cholera banner displayed in the village.

Exclusive to JSS Members

The ever popular silk ties are still available to members for £16 (£12 if collected in person). The Society also offers silver pump motif lapel pins, mugs and the book "John Snow: His Early Years" by Dr Spence Galbraith, available at the special price of £5.

Discount is available for bulk purchases.

Please contact johnsnowsociety@rsph.org.uk for more details.



John Snow Committee

Nominations sought from enthusiasts

According to our constitution, the society's policies are set by a Steering Committee, and proposals are placed before the Annual General Meeting, which takes place at the Pub, following the annual Pumphandle Lecture.

Current Committee members are: Prof Paul Fine (Hon Pumphandle President), Dr Ros Stanwell Smith (Hon Pumphandle Secretary), Prof Sandy Cairncross, Dr Mary O'Mahony, Prof Jimmy Whitworth, Dr Dilys Morgan, Dr John Watson, Dr Adrian Padfield, Prof Andy Hall, Dr Sabine Gabrysch. Members are appointed for three years, terms are staggered, and at least two current members step down each year (PF AH, MO and JWa in 2012). Members standing down may put themselves forward for re-election.

Nominations are invited for membership on the Committee. Only Society members in good standing (with an intact mug*) are eligible. Nominations from young enthusiasts are encouraged. A valid nomination will consist of a statement of no more than 54 words by the nominee, indicating eagerness to serve and vision for the Society. Nominations received by the Society's secretariat (dhunter@rsph.org.uk) by 1st September will be eligible for vote at the AGM.

* Members are reminded that broken mugs (and hence membership standing), and lost membership cards, may be replaced at a cost of £5 and £2 respectively (plus postage).

From the Society's Scrapbook

A scene in Stockholm

From left to right: Thomas Mollet, MSF lead in Katanga, Congo, Angus Nicoll ECDC Flu Reprobate and John Snow imitator, John Snow – still recovering from All Soul's Day 2011 - hence Witch's Hat, Piotr Kramarz, ECDC - Deputy Chief Scientist and Bruno Ciancio, ECDC – Head of Epidemiological Methods with JSS mug with symbolically removed handle (actually it fell off).



John Snow Song

Society Member Mike Weston has composed a ballad about John Snow this can be heard on www.myspace.com/mikewesto02



Contact Details for the John Snow Society

Dawn Hunter Royal Society for Public Health, John Snow House, 59 Mansell Street, London E1 8AN

Tel: +44 (0)20 7265 7332 • Fax: +44 (0)20 7265 7301 • Email: johnsnowsociety@rsph.org.uk

www.johnsnowsociety.org

