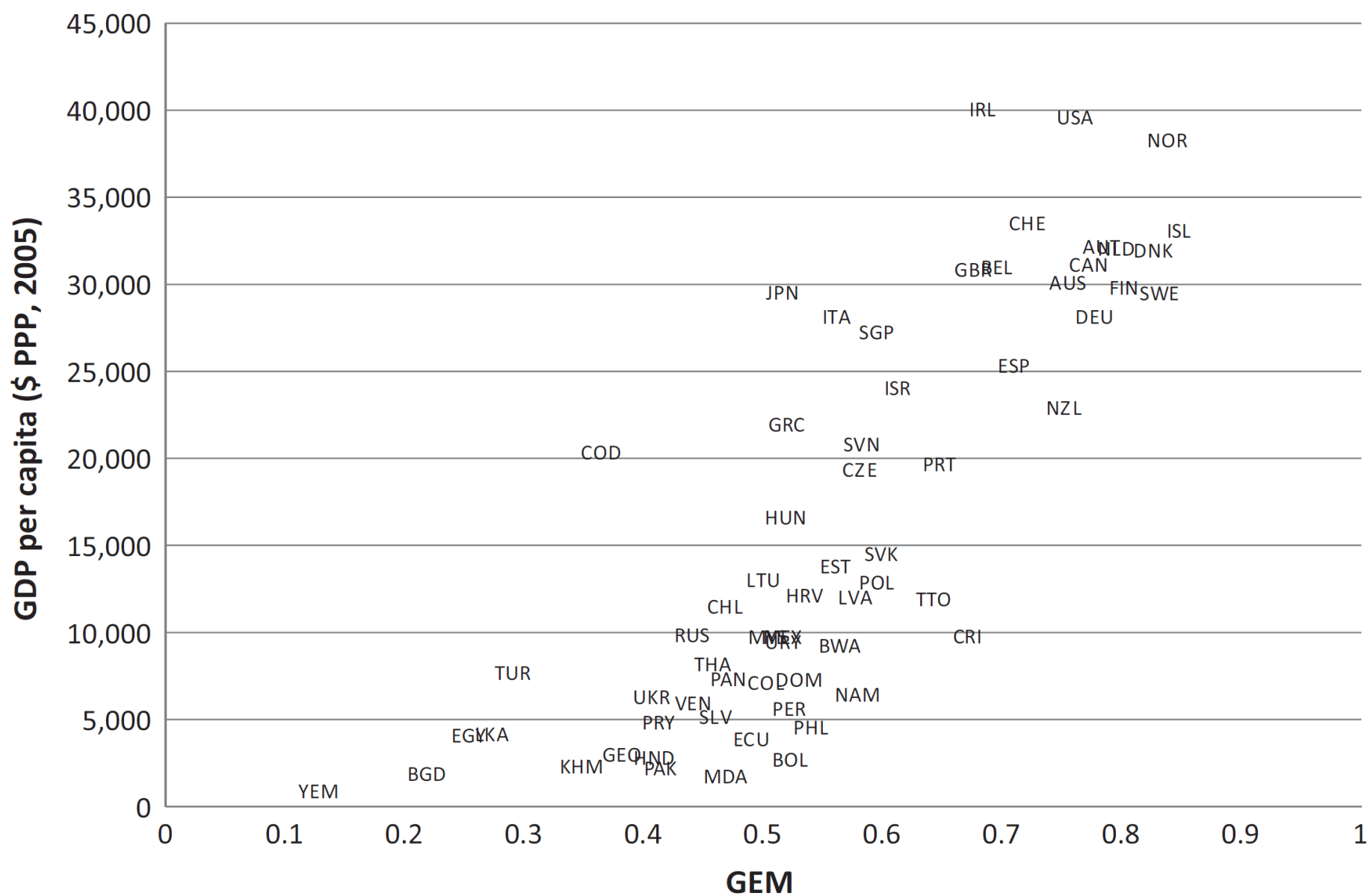


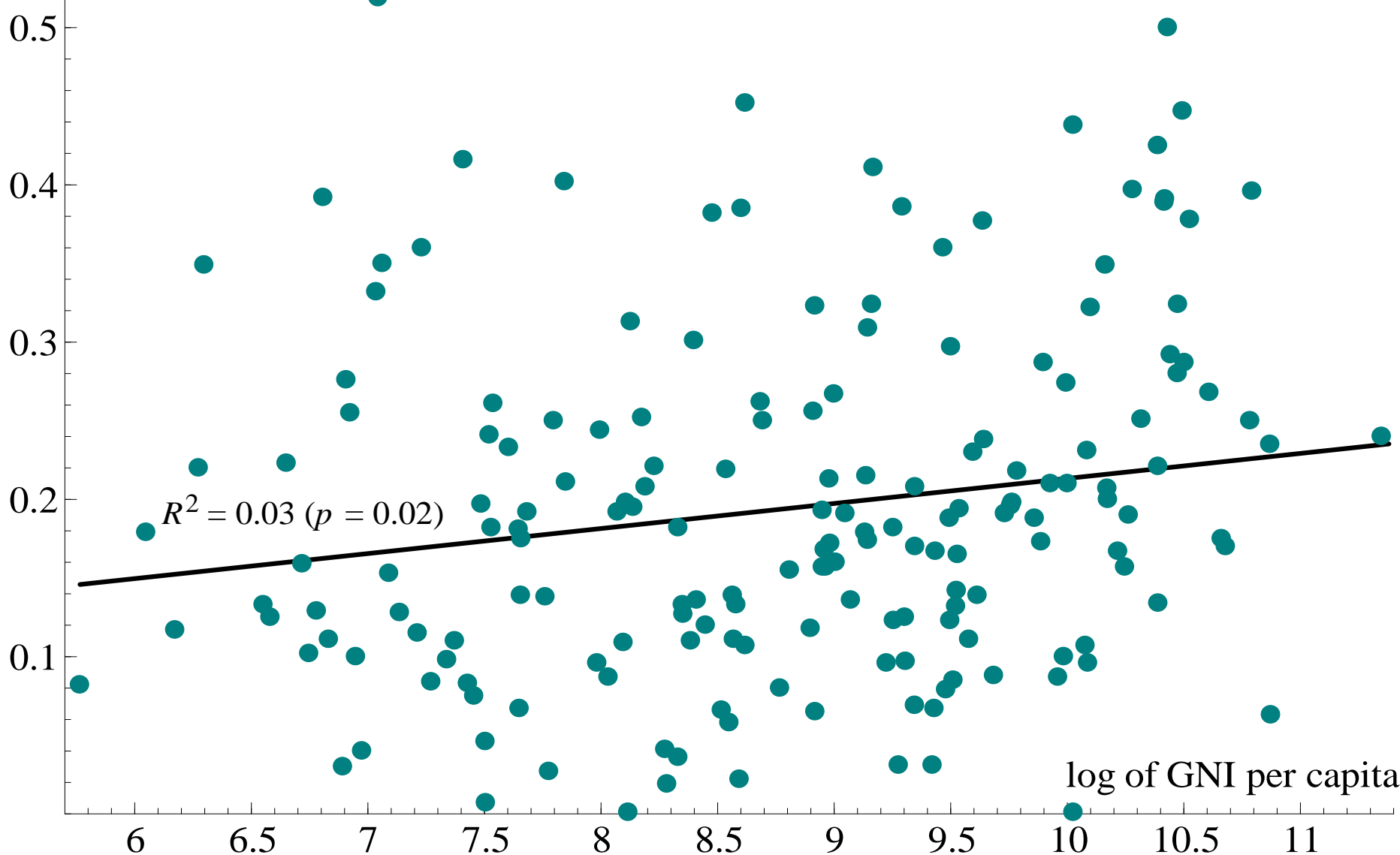
# **How Much Does Women's Empowerment Influence their Wellbeing? Evidence from Africa**

**David Fielding and Aurélie Lépine**



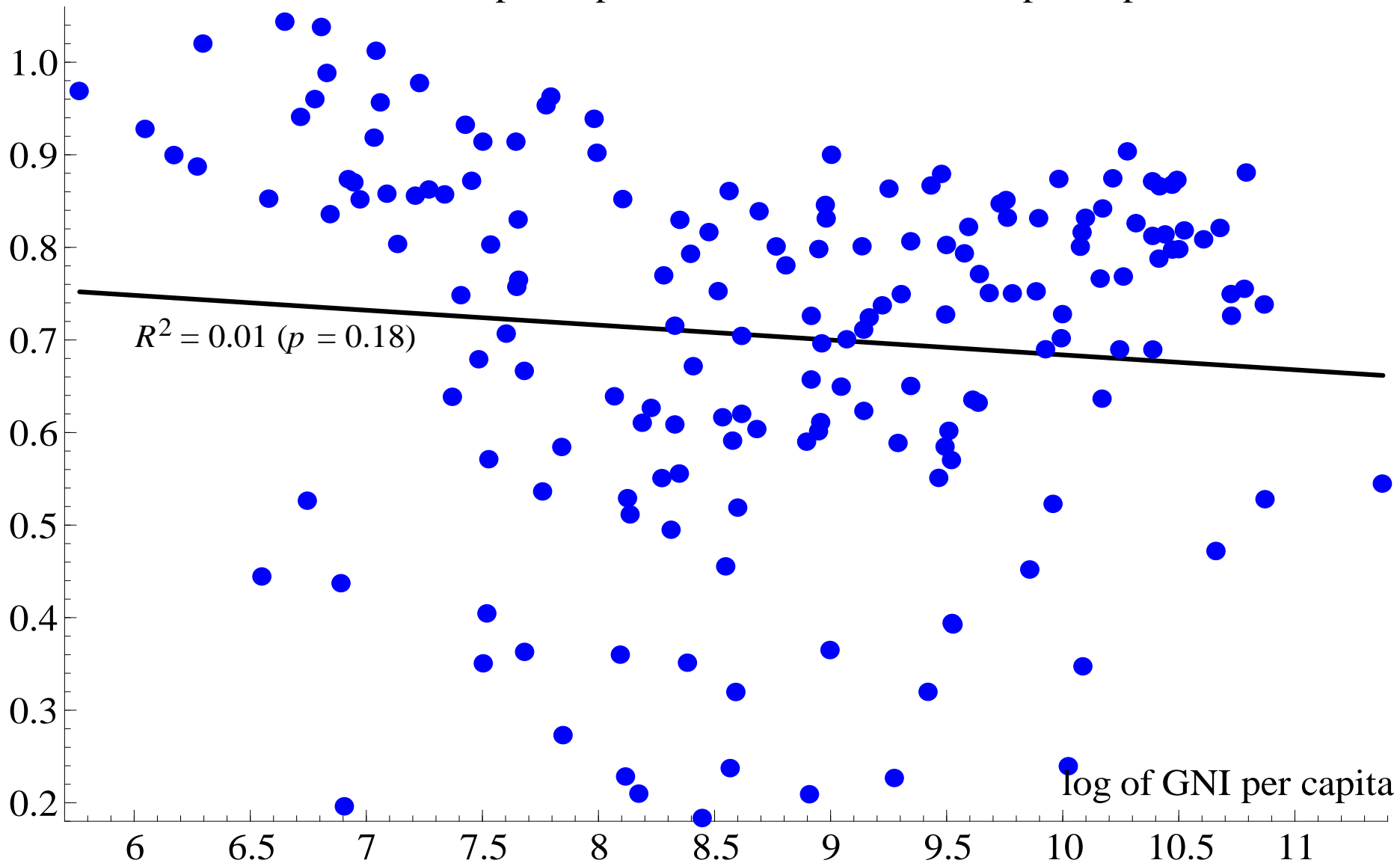
**from Doepke *et al.* (2012)**

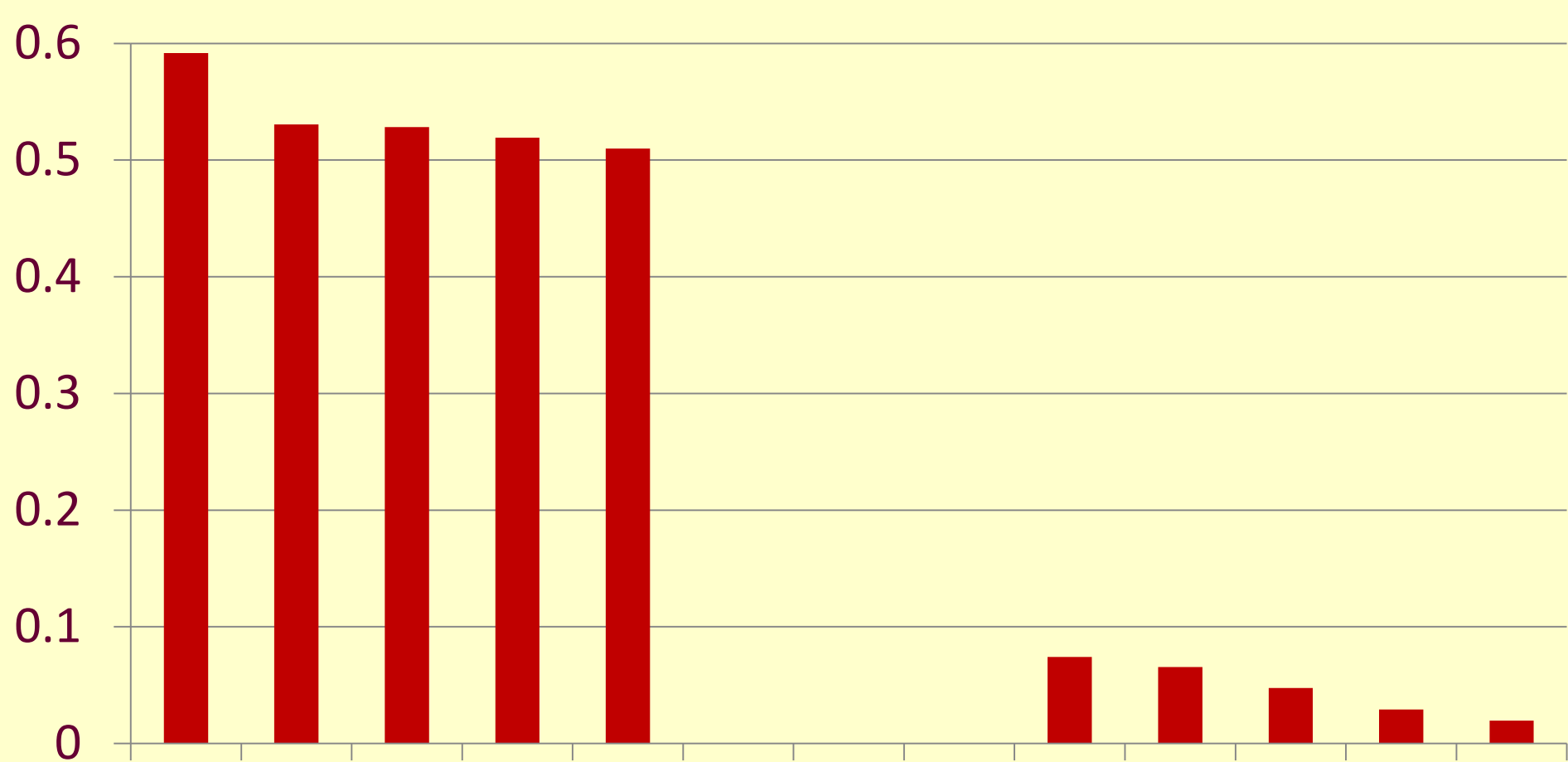
proportion of MPs who are female



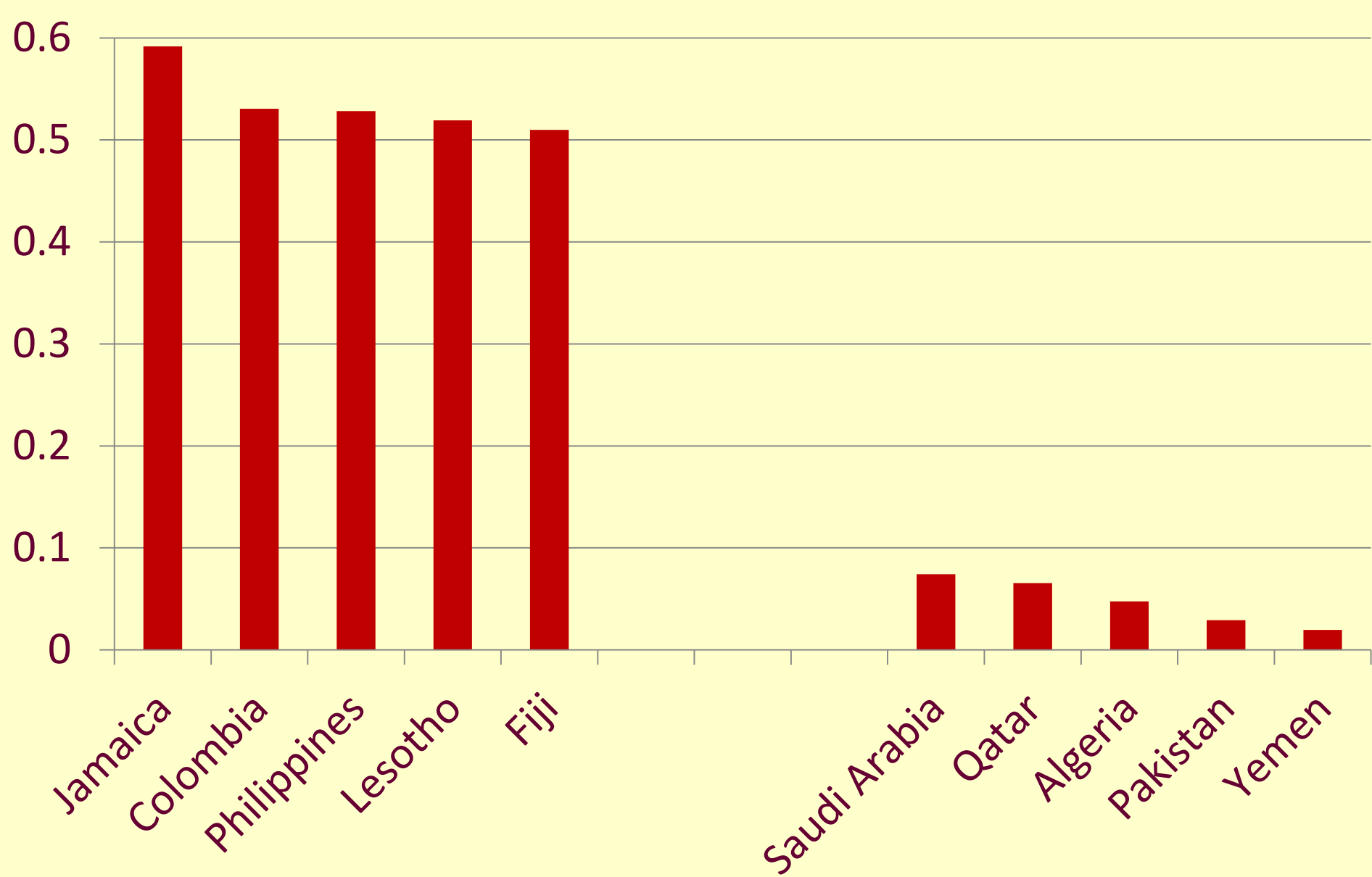
log of GNI per capita

ratio of female labour force participation to male labour force participation

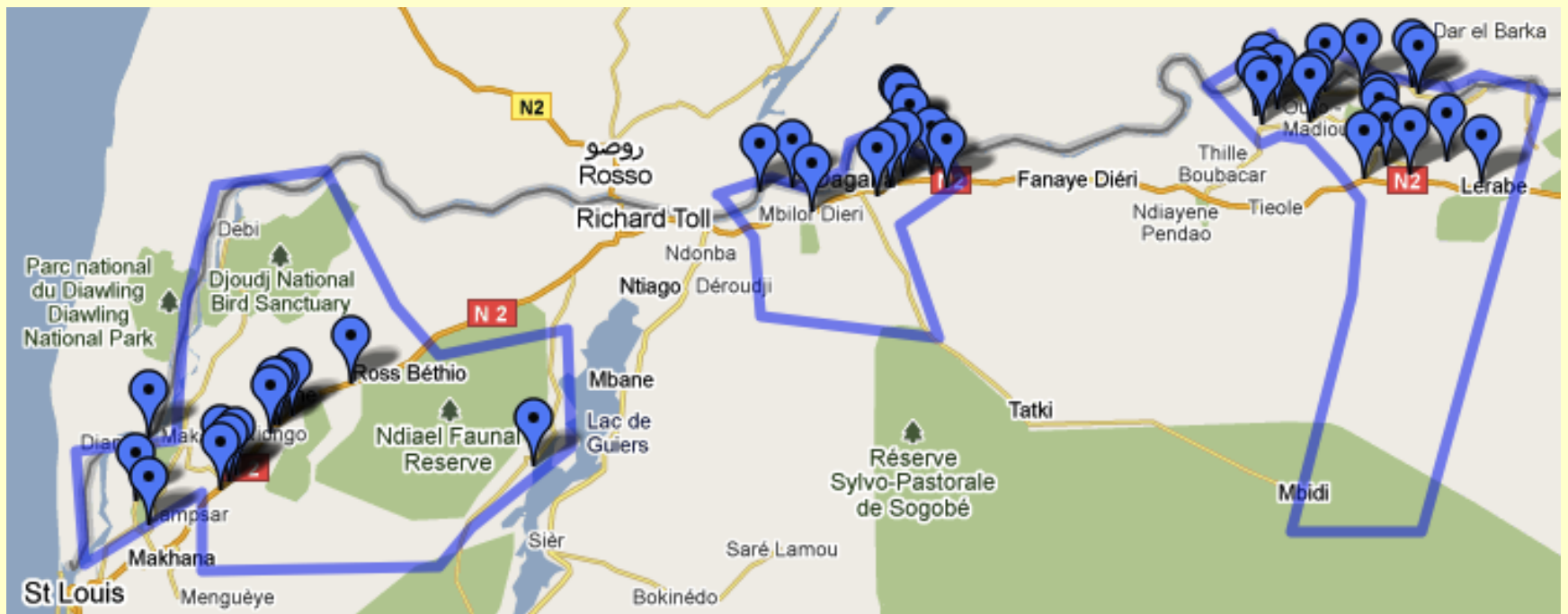




**proportion of senior managers who are female**



**proportion of senior managers who are female**



**39 villages →**

**505 households →**

**1,158 women  
990 men**

# The sample: 668 married & cohabiting women



**PROPORTION OF WOMEN WHO ARE MARRIED & COHABITING, BY AGE**



# Of the 629 married & cohabiting women who completed all of the survey questions...

	<i>number</i>	<i>%</i>
<b><u>Those with no co-wives</u></b>	<b>331</b>	<b>53</b>
<i>Not married to HH</i>	<i>122</i>	<i>19</i>
<i>Married to HH</i>	<i>209</i>	<i>34</i>
<b><u>Those with one co-wife</u></b>	<b>245</b>	<b>39</b>
<b><u>Those with two co-wives</u></b>	<b>53</b>	<b>8</b>

# Survey questions: subjective wellbeing

- **Pain: Do you suffer from bodily pains?**  
often (1) = 46%; rarely or never (0) = 54%
- **Anxiety: Do you feel anxious or depressed?**  
often (1) = 43%; rarely or never (0) = 57%
- **Health: where do you put your current health status on a scale out of 10, where 10 is the best health status and 0 the worst?**  
inverted scale: mean = 4.1; std. dev. = 1.6

# Survey questions: personal autonomy

- **Freedom: Can the wife go out without her husband's permission?**  
yes or it depends (1) = 49%; no (0) = 51%
- **Decisions: Does the wife have a say in decisions about: 1. daily expenditures; 2. large expenditures; 3. health; 4. family visits?**
- **Intervene: Interviewer's record of husband's involvement in interview**  
present (1) = 32%; absent (0) = 68%

# Controls (1)

- Dist*** = distance to nearest hospital in km
- Age*** = age in years
- Walking*** = 2 if easily able to walk 5km,  
= 1 if walks 5km with difficulty,  
= 0 if unable to walk 5km
- Illness*** = 1 if suffering a chronic illness, else = 0
- Fula*** = 1 for Fula, else = 0
- Other*** = 1 for non-Wolof / non-Fula, else = 0

## Controls (2)

***Consumption*** = log household consumption per adult

***Writing*** = 1 if able to write a letter in French, else = 0

***In-law*** = 1 if married to a relative of the HH, = 0 if married to the HH

***Adults*** = number of adults in the household

# Survey questions: support networks

- *How was your last healthcare expenditure financed?*
  - (a) Out of pocket / health insurance (58%)
  - (b) Friends / family (5%)
  - (c) Community group / tontine (8%)
  - (d) Sale of property (29%)

$$\text{Networks} = (b + c) / (b + c + d)$$

$$\text{mean} = 0.32; \text{std. dev.} = 0.23$$

# Spearman rank-order correlations

	<i>anxiety</i>	<i>pain</i>		<i>freedom</i>	<i>decisions</i>
<i>pain</i>	<b>0.47</b>		<i>decisions</i>	<b>0.45</b>	
<i>health</i>	<b>0.30</b>	<b>0.37</b>	<i>intervene</i>	<b>-0.05</b>	<b>-0.03</b>

# Significant random effects

- **Village level** ×
- **Household level** ✓
- **Marriage level** ×



# Results

## Insignificant factors:

- *writing*
- *adults*
- *in-law*
- *dist*
- *children*

# Results

	<i>anxiety</i>	<i>pain</i>	<i>h-s</i>
	<i>m.e.</i>	<i>m.e.</i>	<i>coeff.</i>
<i>freedom</i>	-0.137	-0.160	-0.546
<i>intervene</i>	0.195	0.156	
<i>age</i>	0.007	0.009	0.023
<i>consumption</i>			-0.490
<i>networks</i>			-0.729
<i>can-walk</i>	-0.163		-0.358
<i>easily-walk</i>	-0.244	-0.346	-1.006
<i>illness</i>	0.206	0.153	0.938

# Results

	<i>anxiety</i>	<i>pain</i>	<i>h-s</i>
	<i>m.e.</i>	<i>m.e.</i>	<i>coeff.</i>
<i>freedom</i>	-0.137	-0.160	-0.546
<i>intervene</i>	0.195	0.156	
<b><i>age</i></b>	<b>0.007</b>	<b>0.009</b>	<b>0.023</b>
<i>consumption</i>			-0.490
<i>networks</i>			-0.729
<i>can-walk</i>	-0.163		-0.358
<i>easily-walk</i>	-0.244	-0.346	-1.006
<i>illness</i>	0.206	0.153	0.938

# Results

	<i>anxiety</i>	<i>pain</i>	<i>h-s</i>
	<i>m.e.</i>	<i>m.e.</i>	<i>coeff.</i>
<i>freedom</i>	-0.137	-0.160	-0.546
<i>intervene</i>	0.195	0.156	
<i>age</i>	0.007	0.009	0.023
<b><i>consumption</i></b>			<b>-0.490</b>
<i>networks</i>			-0.729
<i>can-walk</i>	-0.163		-0.358
<i>easily-walk</i>	-0.244	-0.346	-1.006
<i>illness</i>	0.206	0.153	0.938

# Results

	<i>anxiety</i>	<i>pain</i>	<i>h-s</i>
	<i>m.e.</i>	<i>m.e.</i>	<i>coeff.</i>
<i>freedom</i>	-0.137	-0.160	-0.546
<i>intervene</i>	0.195	0.156	
<i>age</i>	0.007	0.009	0.023
<i>consumption</i>			-0.490
<b><i>networks</i></b>			<b>-0.729</b>
<i>can-walk</i>	-0.163		-0.358
<i>easily-walk</i>	-0.244	-0.346	-1.006
<i>illness</i>	0.206	0.153	0.938

# Results

	<i>anxiety</i>	<i>pain</i>	<i>h-s</i>
	<i>m.e.</i>	<i>m.e.</i>	<i>coeff.</i>
<i>freedom</i>	-0.137	-0.160	-0.546
<i>intervene</i>	0.195	0.156	
<i>age</i>	0.007	0.009	0.023
<i>consumption</i>			-0.490
<i>networks</i>			-0.729
<b><i>can-walk</i></b>	<b>-0.163</b>		<b>-0.358</b>
<b><i>easily-walk</i></b>	<b>-0.244</b>	<b>-0.346</b>	<b>-1.006</b>
<b><i>illness</i></b>	<b>0.206</b>	<b>0.153</b>	<b>0.938</b>

# Instruments for Empowerment

- **Clingingsmith *et al.* (2009)**
- **Bernard *et al.* (2008)**
- **Lépine & Ströbl (2013)**

# Instruments for Empowerment

**39 villages:**

- 20 are Fula-only (& small)**
- 2 are Fula-majority**  
**(small, with only 2 Wolof wives)**
- 7 are Wolof-only**
- 10 are Wolof-majority**

***Fula-minority*** = 1 if Fula (or other) & in a Wolof-majority village, else = 0

***Wolof-share*** = fraction of Fula in village if the woman is Wolof, else = 0



# Significant Effects on Empowerment

	<i>freedom</i>	<i>intervene</i>
	<i>m.e.</i>	<i>m.e.</i>
<i>age</i>		0.006
<i>in-law</i>		-0.316
<i>Fula</i>	-0.465	0.241
<i>dist</i>	-0.012	0.008
<i>networks</i>	0.344	-0.339
<i>Fula-minority</i>	0.415	0.272
<i>Wolof-share</i>		0.861

# Significant Effects on Empowerment

	<i>freedom</i>	<i>intervene</i>
	<i>m.e.</i>	<i>m.e.</i>
<i>age</i>		0.006
<i>in-law</i>		-0.316
<i>Fula</i>	-0.465	0.241
<i>dist</i>	-0.012	0.008
<b><i>networks</i></b>	<b>0.344</b>	<b>-0.339</b>
<i>Fula-minority</i>	0.415	0.272
<i>Wolof-share</i>		0.861

# Significant Effects on Empowerment

	<i>freedom</i>	<i>intervene</i>
	<i>m.e.</i>	<i>m.e.</i>
<i>age</i>		0.006
<i>in-law</i>		-0.316
<i>Fula</i>	-0.465	0.241
<i>dist</i>	-0.012	0.008
<i>networks</i>	0.344	-0.339
<b><i>Fula-minority</i></b>	<b>0.415</b>	<b>0.272</b>
<b><i>Wolof-share</i></b>		<b>0.861</b>

# IV Versus Original Results

	<i>anxiety</i>	<i>pain</i>	<i>h-s</i>
	<i>m.e.</i>	<i>m.e.</i>	<i>coeff.</i>
<i>freedom (original)</i>	<b>-0.137</b>	<b>-0.160</b>	<b>-0.546</b>
<i>freedom (IV)</i>		<b>-0.121</b>	<b>-0.359</b>
<i>intervene (original)</i>	0.195	0.156	
<i>intervene (IV)</i>	0.129	0.111	

# IV Versus Original Results

	<i>anxiety</i>	<i>pain</i>	<i>h-s</i>
	<i>m.e.</i>	<i>m.e.</i>	<i>coeff.</i>
<i>freedom (original)</i>	-0.137	-0.160	-0.546
<i>freedom (IV)</i>		-0.121	-0.359
<i>intervene (original)</i>	<b>0.195</b>	<b>0.156</b>	
<i>intervene (IV)</i>	<b>0.129</b>	<b>0.111</b>	

**‘Although her husband is the richest man in the village, Ndey proclaimed that she would rather be in her sister’s marriage to a poor farmer than in her own to a rich man. Another woman observed, “Those without money [are] the ones who take best care of their wives.”’**

**Perry (2005)**